

A Division of Thiessen Products, Inc.

INSTRUCTION SHEET FOR No.5400, 5401 & 5402

14. Locate the other wire coming out of the housing grommet. It has a four pin male white plastic connector that you connect to the new main cooler harness hanging down from the motorcycles main harness area.

See Fig 5

15. Connect the two white plastic connectors together. They will only connect when positioned correctly to each others notch. **See Fig 14**
16. Now its time to do the final positioning of the wire loom in the area behind the cooler assembly and up on the upper horn mount to the main loom area.

Note: *It is very important area and is the installer responsibility to route and anchor harness wiring away from the cylinders and fan blades. If not done correctly it can cause electrical shorts causing fire or further damage or bodily harm. If your not sure about this then take it to a qualified professional. Jims cannot be responsible for your safety or workmanship.*

17. Do a temporary install of the cooler assembly on the two rubber isolator mounts Hand tighten your stock H-D horn mount acorn nut on the top larger rubber isolator and a No. 5438 acorn from kit to secure assembly.
18. Check wiring coming out of the back of cooler housing and take out any slack by lightly pulling on harness going up to the upper horn mount area and up to the notched out area of the harness trough. Do a visual check inside cooler to see that all wiring has clearance. No wiring can come in contact with the fan blade, including cylinders. Reposition any extra slack in the harness back to the battery area. Route wiring over top for upper horn mount to trough area and secure by tie wrapping for the final operating position.
19. Remove the cooler assembly top and lower mounting nuts to apply Blue Treadlocker to both. Install Logo disc No.5426 to the upper isolator mount and then the H-D original horn mount acorn and do the final tightening torque to 7 to 9 ft lbs.
20. Install the lower the washer No. 1683 and apply Blue Threadlocker to No. 5427 acorn nut and do a final tightening.

After the cooler is anchored take your finger and spin the fan blade to check for clearance. You should have at least 1/4" between cylinder and fan blade. **See Fig 15**



Performance Parts For Harley-Davidson Motorcycles



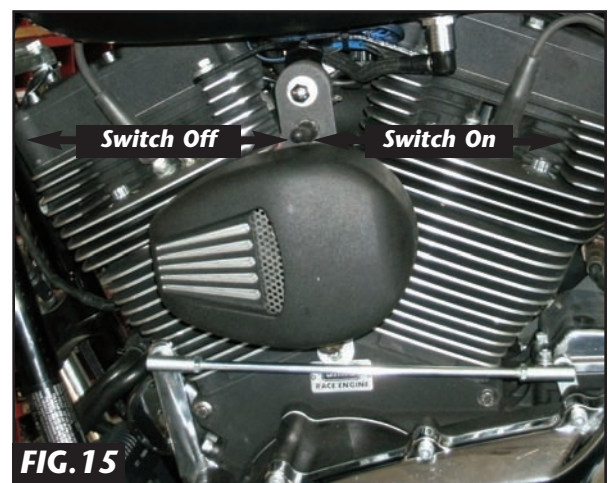
A Division of Thiessen Products, Inc.

INSTRUCTION SHEET FOR No.5400, 5401 & 5402

21. Now tuck in the cooler harness into the left side of the motorcycle trough harness. Then reinstall the wire harness upper trough cover back in its normal position on FLH touring models per H-D Service Manual. On the FXST or FXD models securing the cooler harness wiring with tie wraps will be required.
 22. Remove left side fuse cover per H-D Service Manual and locate the Deutsch Data Link Connector. **See Fig 16**
 23. Locate the other Deutsch connector housing from the cooler harness coming from underneath the back end of the trough cover. Connect to the Data Link Deutsch Connector. Reinstall the fuse side cover. **Fig 16**
 24. Locate the negative battery cable and set the negative cooler wiring eyelet on top of it and mount negative battery cable to the battery post as shown. **See Fig 17**
- Note:** If your vehicle does not have a Deutsch connector, simply use this wire to tap into any ignition accessory circuit.
25. Pull aside and cooler wire harness relay section and install the ECM caddy cover as per H-D Service Manual. After the caddy cover is in place then lay the relay wire harness section right along the side of the frame as shown. You can also anchor it if you like. **See Fig 18**

Note: If your vehicle does not have a have, or has a different Deutsch connector, simply use this wire to tap into any ignition accessory circuit.

27. Reinstall the fuel tank, fuel lines, saddlebags and seat per H-D Service Manual.
28. Now you need to take a test ride and get the motor warmed up. position cooler switch in the on position (forward is "OFF" and rear is "ON" position) **See FIG.15**. Easiest way to check temp. is with a infrared heat gun. When your engine heats up enough to bring the top rocker box to 140 degrees the cooler should start up. If you find your fan motor is not going on then turn the toggle switch to the other position and see if that starts the fan motor.

**FIG. 14****FIG. 15****FIG. 16**

Performance Parts For Harley-Davidson Motorcycles



INSTRUCTION SHEET FOR No.5400, 5401 & 5402

Note: If your a Dealer Service Dept. installing this product for a customer please forward the JIMS Warranty Card to the customer or end user when completing service and advise to complete and mail in.

6 MONTH WARRANTY

JIMS will repair or replace at our option any product found to be defective in materials or workmanship for six (6) months from date of purchase. This warranty does not cover items damaged by accident, misuse, or neglect. Any implied warranties are expressly excluded, and JIMS shall not be liable for any loss of product use, or other consequential or incidental costs incurred by the user of our tools.

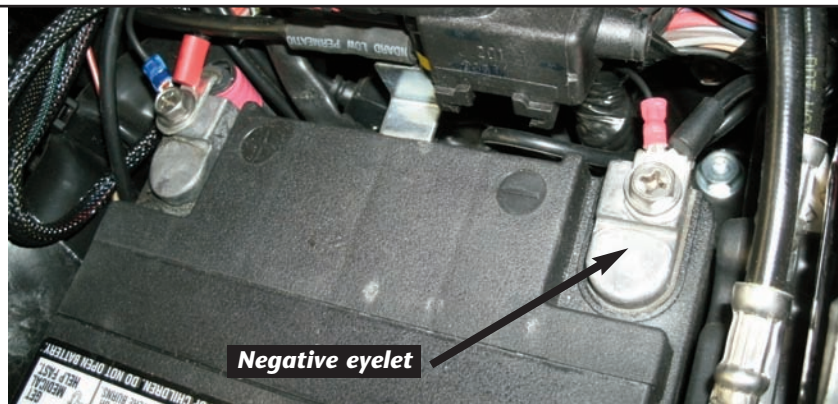
FOR WARRANTY

All returns for warranty must authorized by the sales dept. before returning product.

WARNING!!!

REMEMBER TO KEEP HANDS AND ALL OBJECTS CLEAR OF THE SPINNING FAN BLADE WHENEVER FORCEFLOW UNIT IS SWITCHED TO THE "ON" POSITION.

FIG. 17

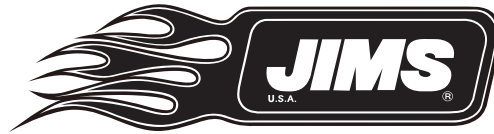


Cooler Relay

FIG. 18

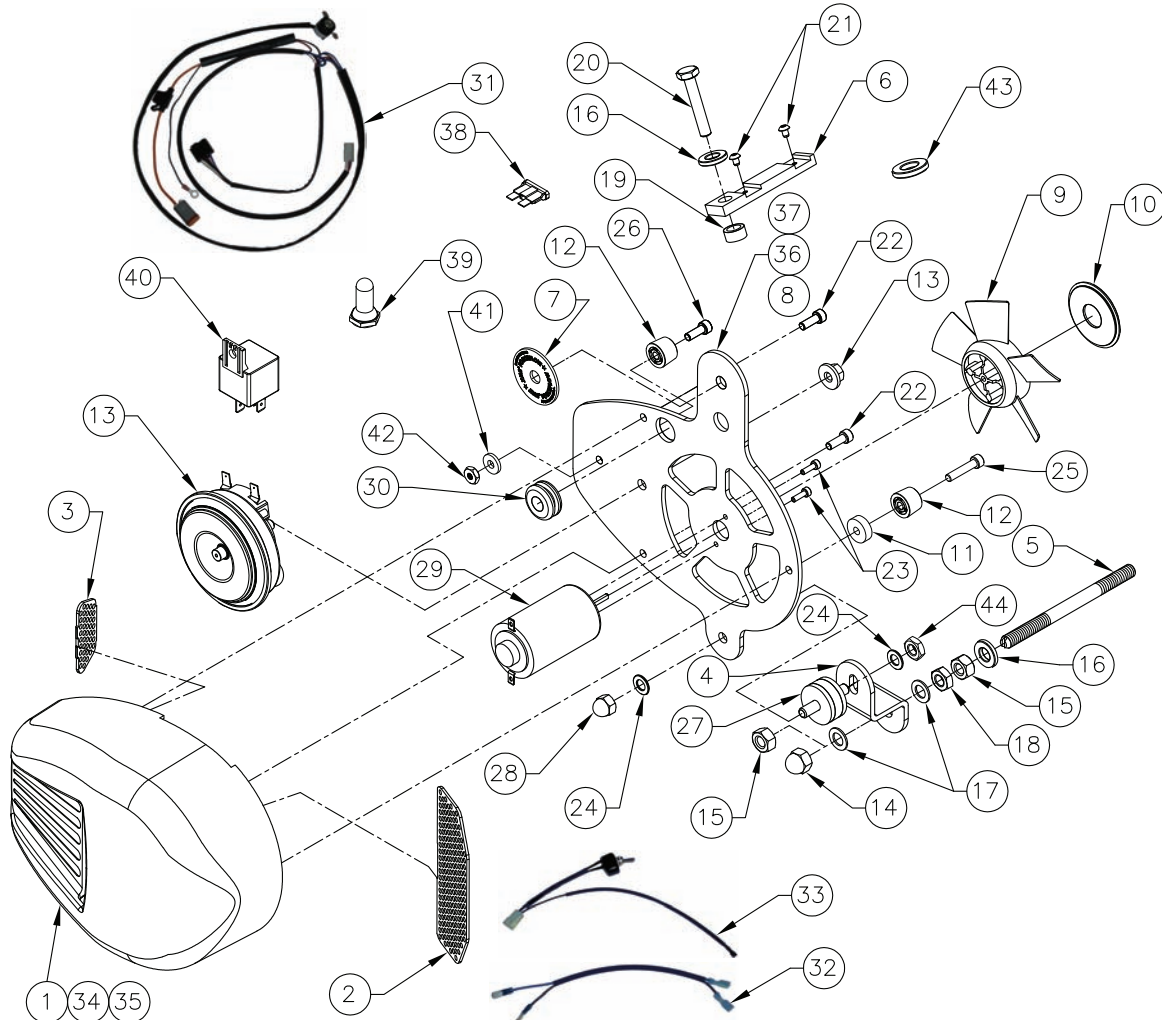


Performance Parts For Harley-Davidson Motorcycles



A Division of Thiessen Products, Inc.

INSTRUCTION SHEET FOR No.5400, 5401 & 5402



PARTS LIST			
NO.	QTY.	TITLE OR DESCRIPTION	PART NUMBER
1	1	COVER, CYLINDER COOLER, POLISH	5407-2
2	1	SCREEN, SCOOP	5412
3	1	SCREEN, FRONT	5411
4	1	MOUNT, LOWER, MOTOR HD, ZINC	5413
5	1	STUD, CASE, 5/16-18, CYLINDER COOLER	5414
6	1	MOUNT, THERMOSTAT	5434
7	1	PLATE, DISC, LOGO	5426
8	1	BACKING PLATE CYLINDER COOLER, POLISH	5406-2
9	1	MACHINED, FAN BLADE	5405
10	1	COVER, END, FAN	5428
11	1	SPACER WASHER	5452
12	2	BUMPER, HARD THERMOPLASTIC	5451
13	1	HORN, ROOT w/ FLANGE NUT	5410
14	1	NUT, ACORN, 5/16-18, NICKEL PLATE	5427
15	2	NUT, 5/16-18, SAE	1222
16	2	WASHER, FLAT, 5/16", SAE	2014
17	2	WASHER, FLAT, 5/16", AN, .05-.07 THICK	1216
18	1	NUT, 5/16-18, JAM	5436
19	1	SPACER, 5/16 ID x 1/4"	5435
20	1	BOLT, 5/16-18 x 1-1/2" HH	5439
21	2	SCREW, 6-32 x 3/16", BUTTON HEAD	5440
22	2	SCREW, 10-32 x 1/2", SHCS	1294
23	2	SCREW, 3mm x .5 x 10mm, SHCS	5421
24	2	WASHER, FLAT, 1/4", AN, .05-.07 THICK	5437

PARTS LIST			
NO.	QTY.	TITLE OR DESCRIPTION	PART NUMBER
23	2	SCREW, 3mm x .5 x 10mm, SHCS	5421
24	2	WASHER, FLAT, 1/4", AN, .05-.07 THICK	5437
25	1	10-32 x 7/8" SHCS	5271
26	1	10-32 x 5/8" SHCS	5450
27	1	ISOLATOR, Ø1" x 1/2", 1/4-20 x 1/2"	5419
28	1	NUT, ACORN, 1/4-20, NICKEL PLATE	5438
29	1	MOTOR, DETMAR	5404
30	1	GROMMET, 3/8" ID x 1/8" PANEL	5418
31	1	WIRING HARNESS MAIN	5423
32	1	WIRE EXTENSION HORN	5433
33	1	HARNESS POWER ON/OFF	5408
34	1	COVER, CYLINDER COOLER, BLACK	5407-1
35	1	COVER, CYLINDER COOLER, SILVER	5407-3
36	1	BACKING PLATE CYLINDER COOLER, BLACK	5406-1
37	1	BACKING PLATE CYLINDER COOLER, SILVER	5406-3
38	1	AMT 15 AMP FUSE	5432
39	1	SWITCH BOOT	5417
40	1	RELAY	5422
41	1	#10 FLAT WASHER	5449
42	1	10-32 NUT	1399
43	4	WASHERS, OPTIONAL HORN MOUNT	5453
44	1	NUT, 1/4-20	2017
45	1	WARRANTY CARD	5454
46	1	INSTRUCTION SHEET	5400-IS

Performance Parts For Harley-Davidson Motorcycles

555 DAWSON DRIVE, CAMARILLO, CA 93012 PHONE 805-482-6913 • FAX 805-482-7422